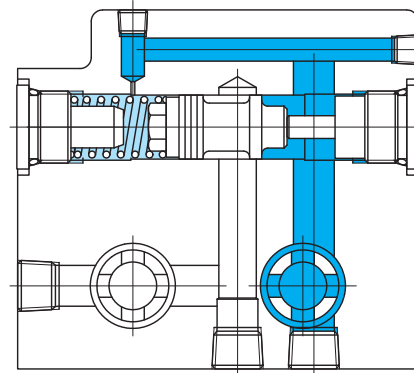
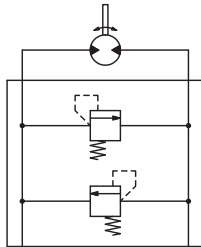


Brake valves BR-03 (for CR/GR-M motor)



Functional Symbol



Model Code

(F3)-BR-03-150-10-(S1)

1 2 3 4 5 6

- 1 Hydraulic fluid
Omit: mineral oil
F3: Phosphate ester
- 2 Brake valve
- 3 Size
- 4 Cracking pressure code (Refer to "Specifications".)
- 5 Design no.
- 6 Special feature
S1: No mounting bolt, mounting nut or O-ring. (used with when stacking counterbalance valve module CB-03)

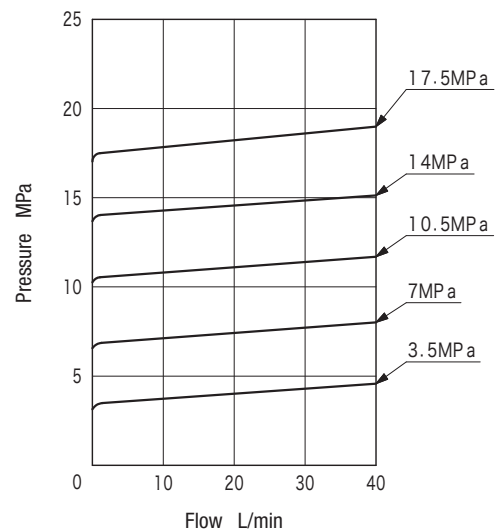
Specifications

Size	Max. Working Pressure MPa	Rated Flow L/min	Cracking Pressure MPa	Guaranteed Pressure Proof MPa	Weight kg
03	21	40	See the Table below	28	3.3

Code	050	075	100	125	150	175	200	225	250
Cracking Pressure MPa	3.5	5.25	7	8.75	10.5	12.25	14	15.75	17.5

Characteristics Curve (at 20 mm²/s) (typical examples)

Flow-Pressure Characteristics



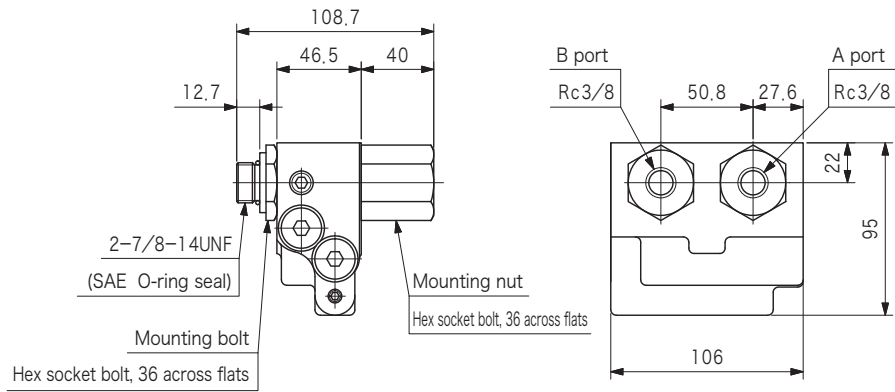
TOKYO KEIKI INC.

N
7-1

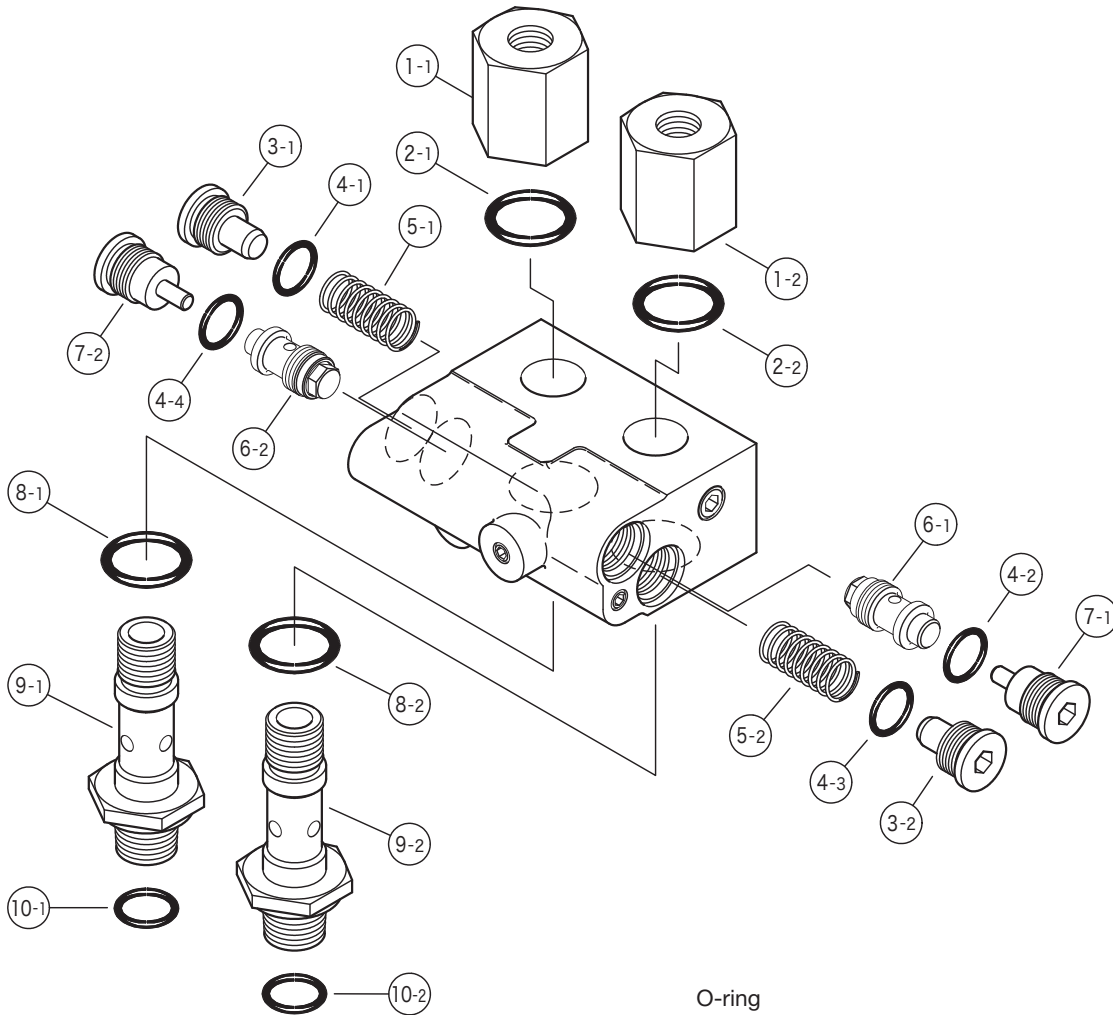
Motors (Gear)

Dimensions

BR-03-***-10



Construction



O-ring

No.	Part No.	Standard	Qty
2	008002419	JIS B 2401 1B-P25	2
4	007990819	AS568-908 (NBR, Hs90)	4
8	008002419	JIS B 2401 1B-P25	2
10	007991019	AS568-910 (NBR, Hs90)	2

N
7-2

Motors (Gear)